

ALF

Dieter Kirschbaum

Türnicher Str. 3 * 50969 Köln

Tel: 0221/9367715

Fax: 0221/9367719

mailto:kirschbaum-merzenich@t-online.de

www.kirschbaum-schaufensterfiguren.de





INTRODUCING: ALEC REALISTIC

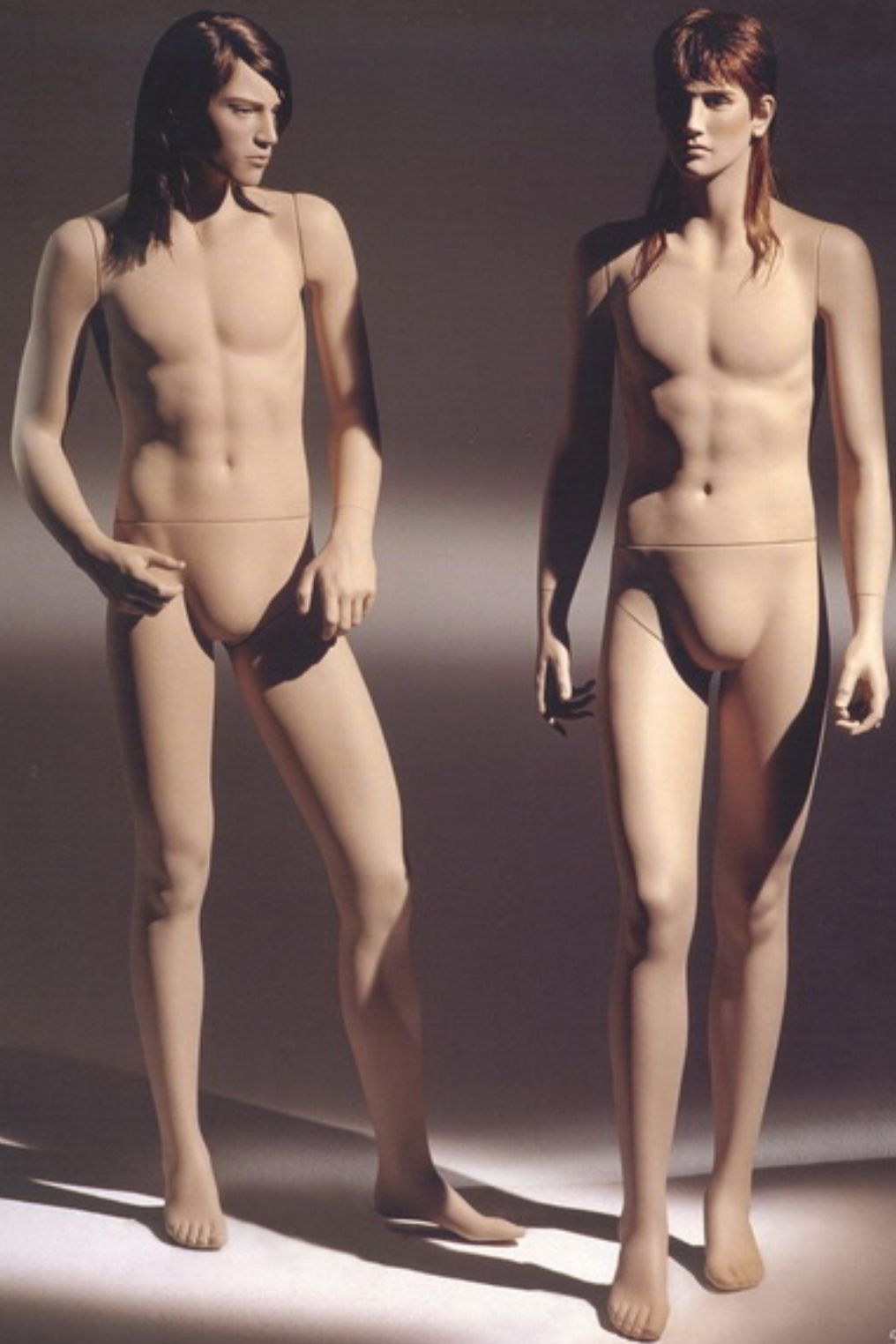




300

Make up: U.127

Wig: NWM.340





ALEC
ALEC
ALEC



288

Make up: U.127

Wig: NWM.339



295

Make up: U.127

Wig: NWM.337

5202/295

Height: cm. 137 - 54"

Width: cm. 55 - 21³/₄"

Block h: cm. 47 - 18¹/₂"



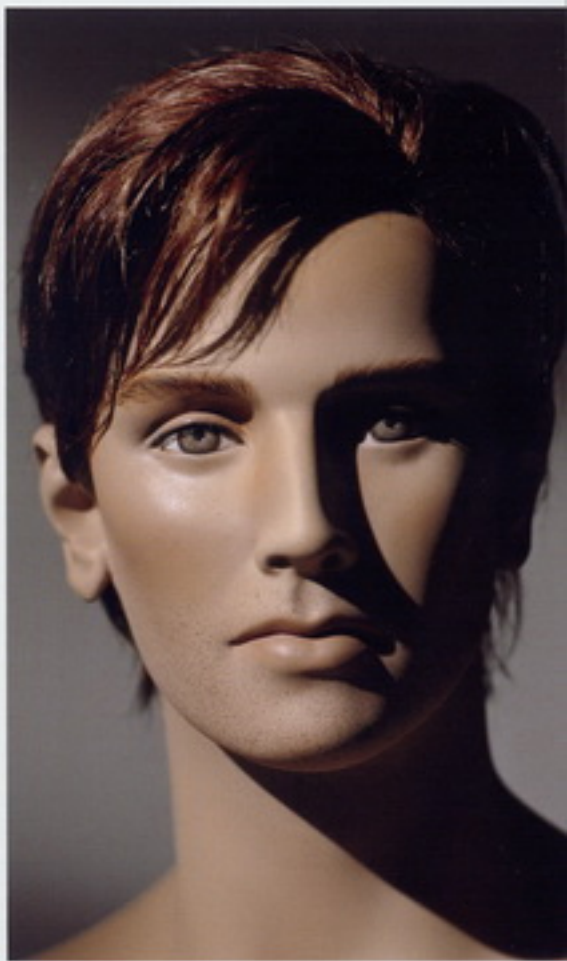


297
Make up: U.127
Wig: NWM.332

5211/297







298

Make up: U.127

Wig: NWM.342



ALEC
ALEC
ALEC



ALEC
ALEC

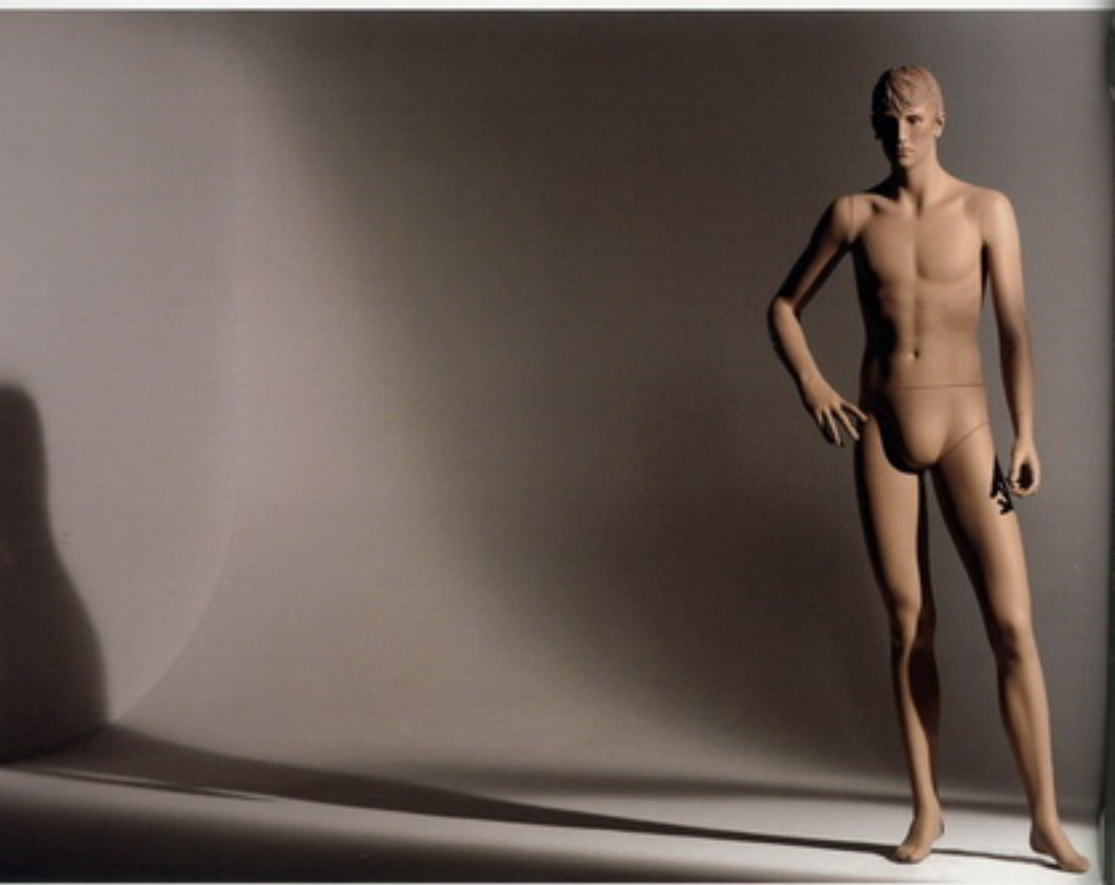


5215/287

Make up: U.13

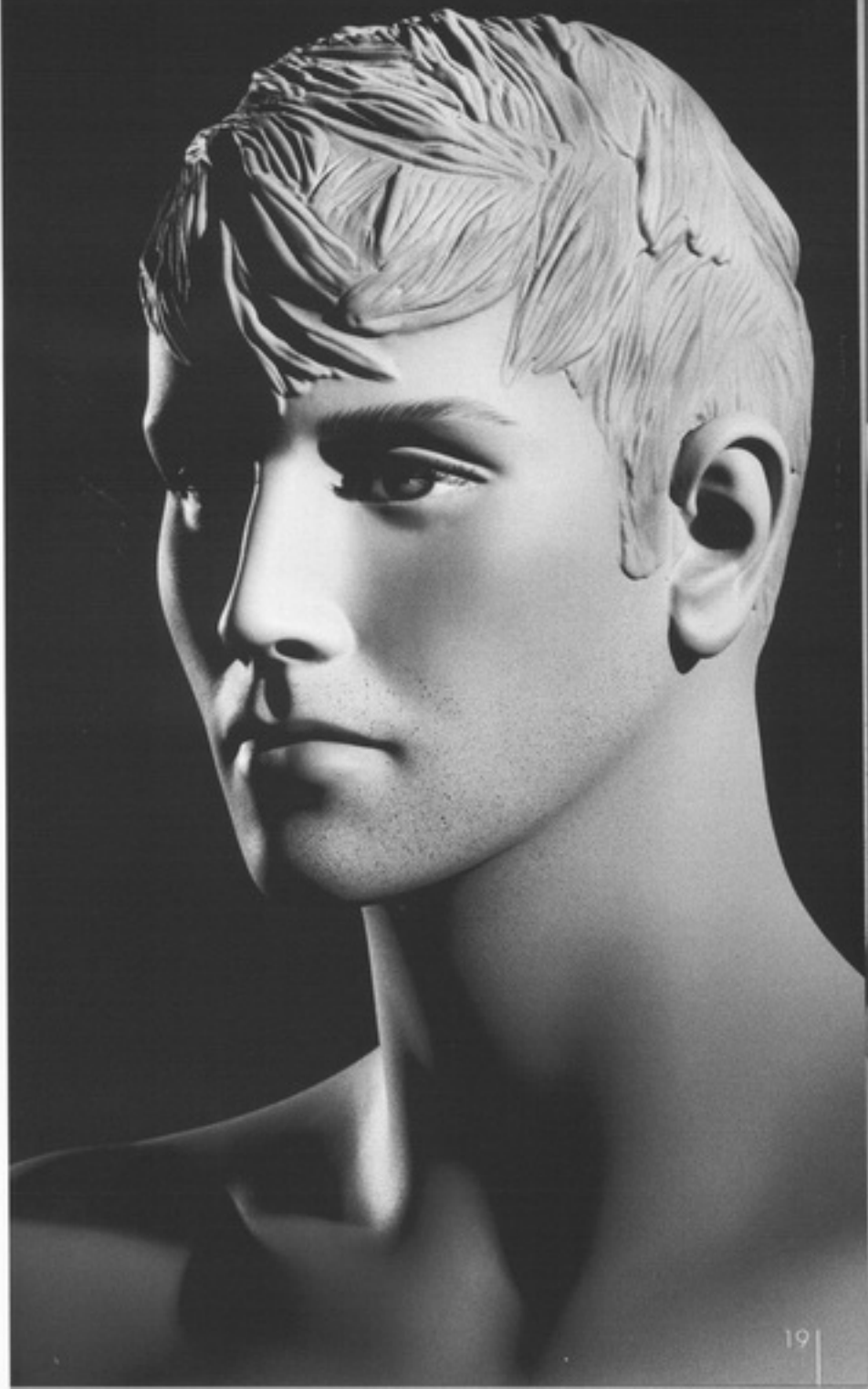
Wig: NWM.34





5210/S.219
Make up: SH.277

INTRODUCING: ALEC SCULPTED







5203/S.218

Make up: SH.277





S.220

Make up: SH.277





ALEC
ALEC
ALEC



All the models: body col. 233TZA

Height:	cm. 184	72 $\frac{1}{2}$ "
Collar:	cm. 36	14 $\frac{1}{4}$ "
Chest:	cm. 90	35 $\frac{1}{2}$ "
Waist:	cm. 75	29 $\frac{1}{2}$ "
Inside leg:	cm. 86	34"
Shoes:	44	10"

All dimensions are approximate



Concept & Art direction studio Nando Niglio - Photo by Angela Morabito - Alibi: Lulu-Creppes Fornelli - © 2006 Almax S.p.A.

**Almax**[®]

MANNEQUINS AND DISPLAY ITEMS