

DAVID

Dieter Kirschbaum
Türnicher Str. 3 * 50969 Köln

Tel: 0221/9367715
Fax: 0221/9367719

dieter.kirschbaum-Merzenich@t-online.de
www.kirschbaum-schaufensterfiguren.de


MANNEQUINS AND DISPLAY ITEMS



INTRODUCING: DAVID REALISTIC



293

Make up: U.132

Wig: NWM.344









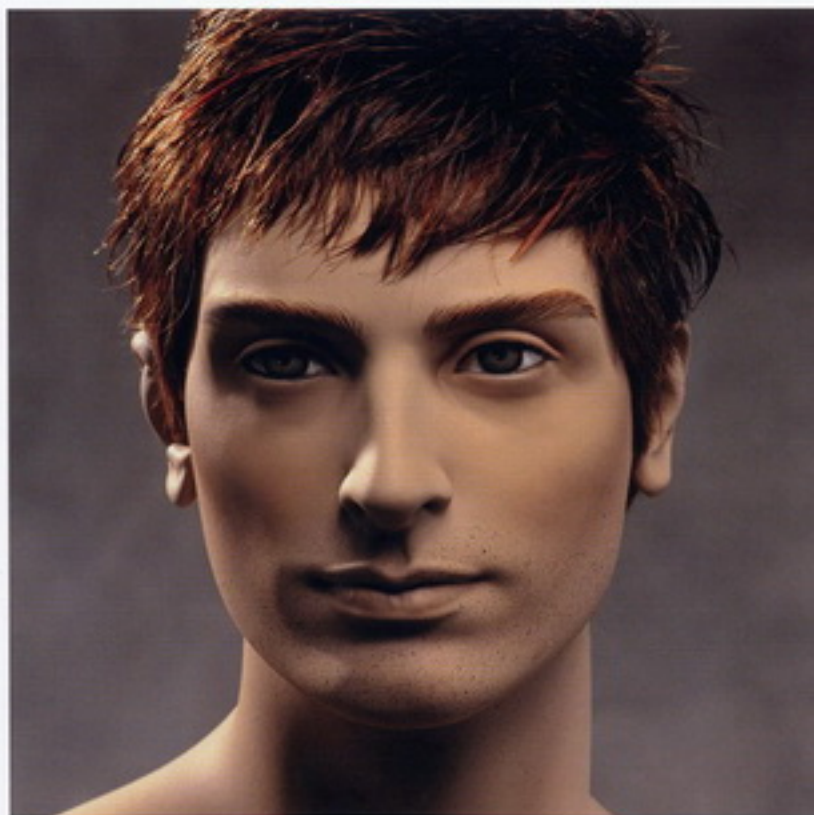
2901/292

292

Make up: U.132

Wig: NWM.348

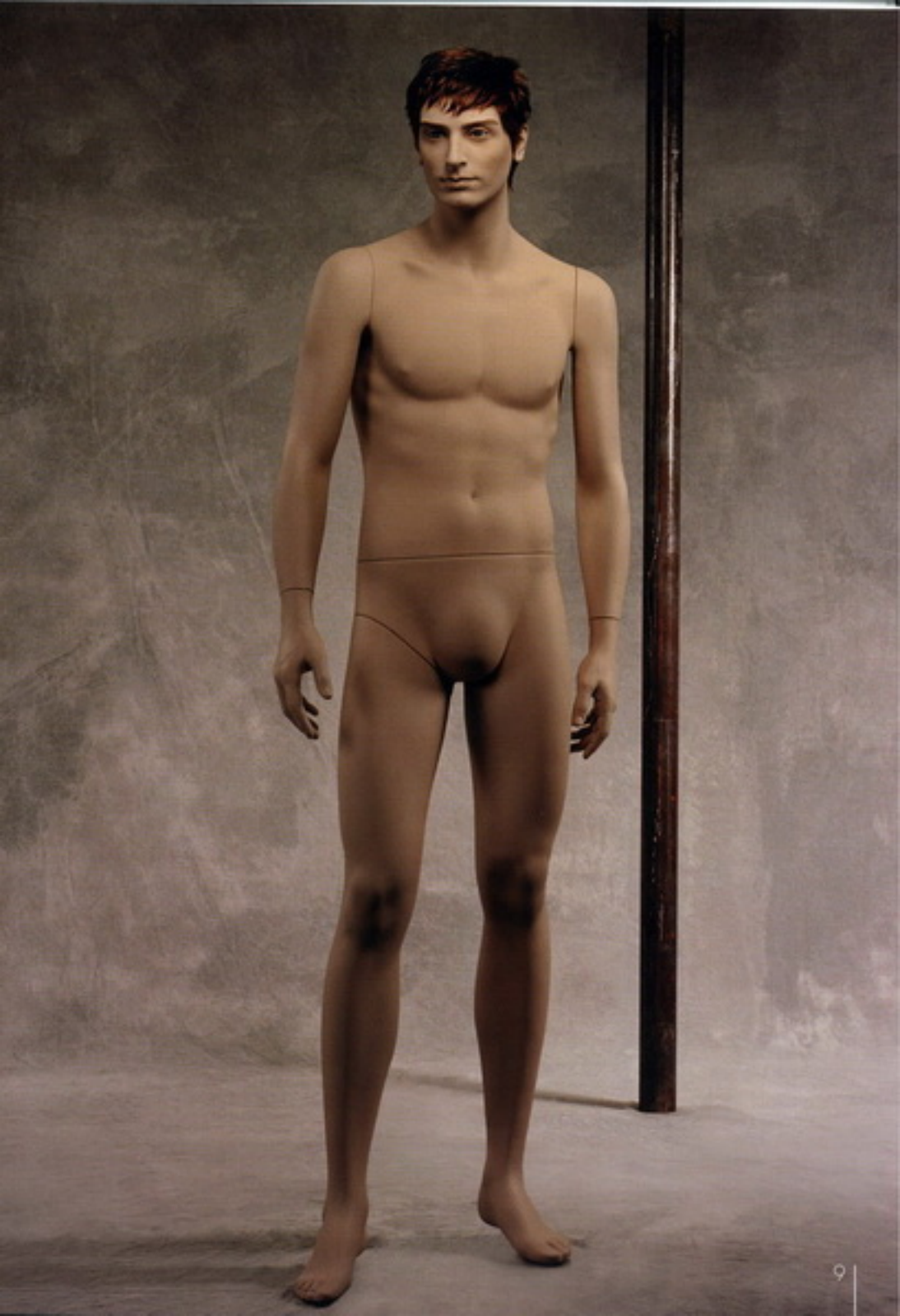
DAVID
DAVID
DAVID



551

Make up: U.128

Wig: NWM.345





291

Make up: U.128

Wig: NWM.350



550

Make up: U.128

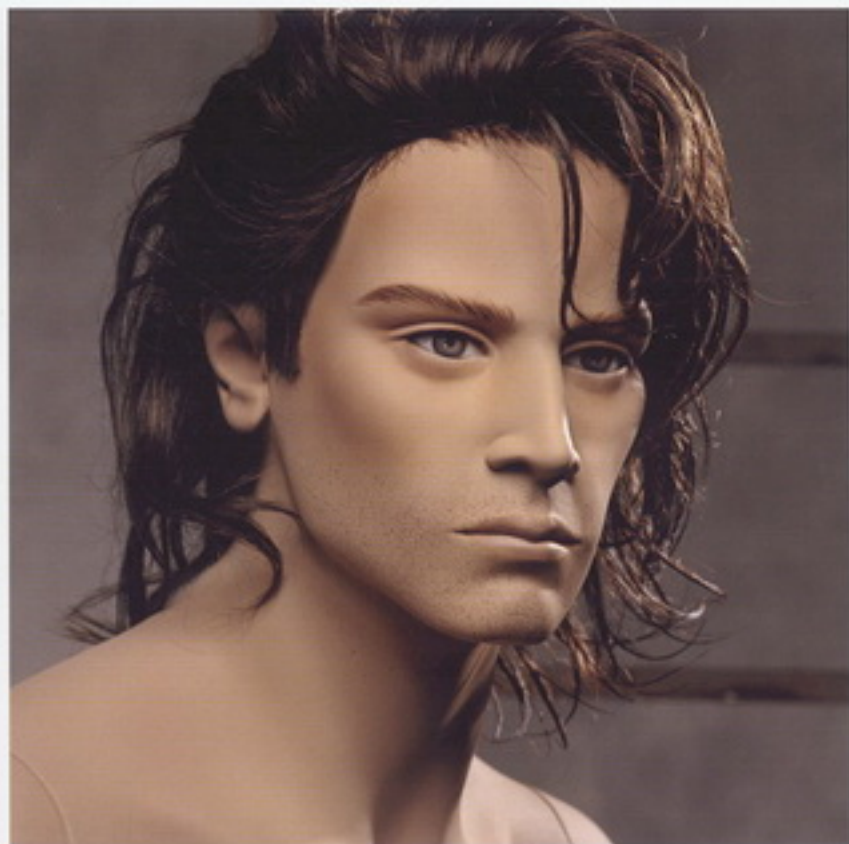
Wig: NWM.349

2906/550

11 |



DAVID
DAVID
DAVID



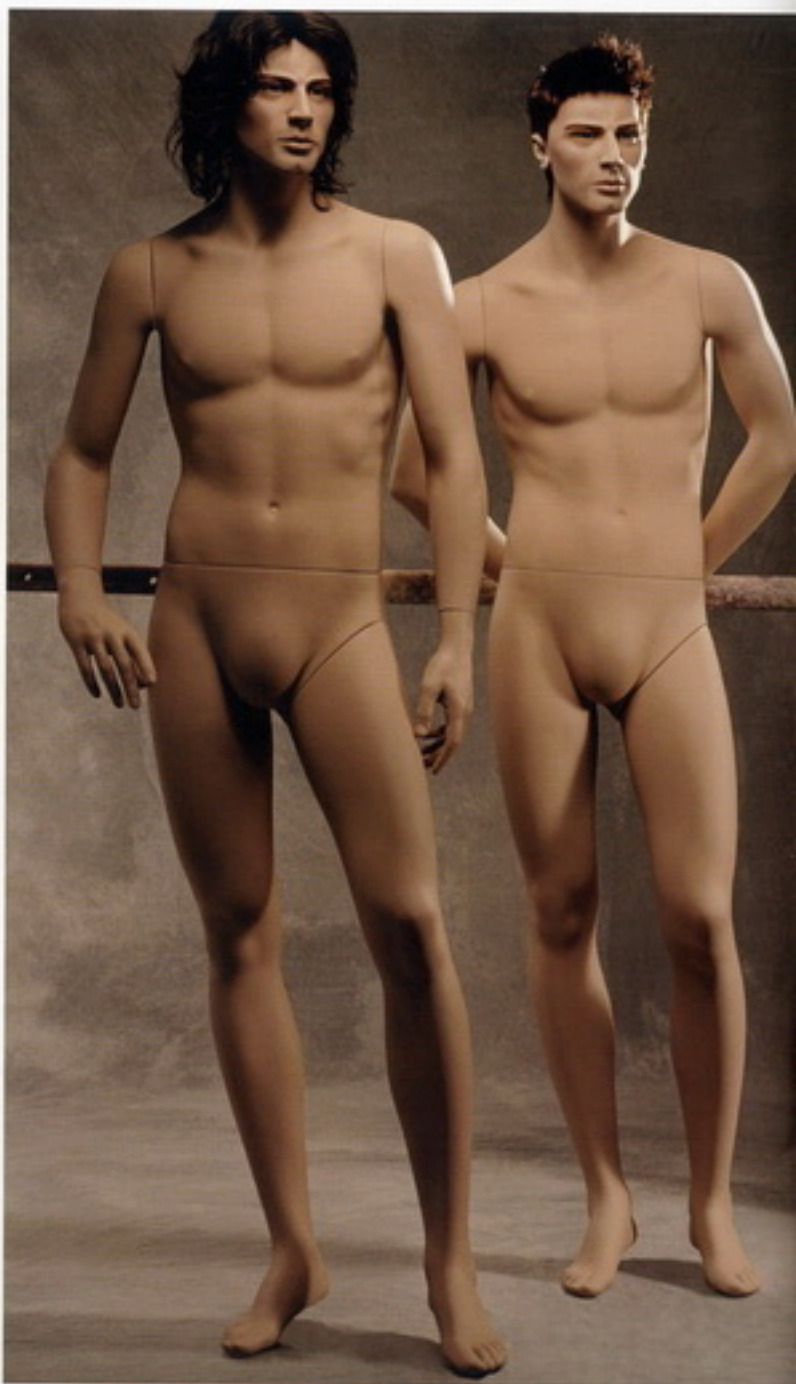
553

Make up: U.128

Wig: NWM.346







2907/554



554

Make up: U.128

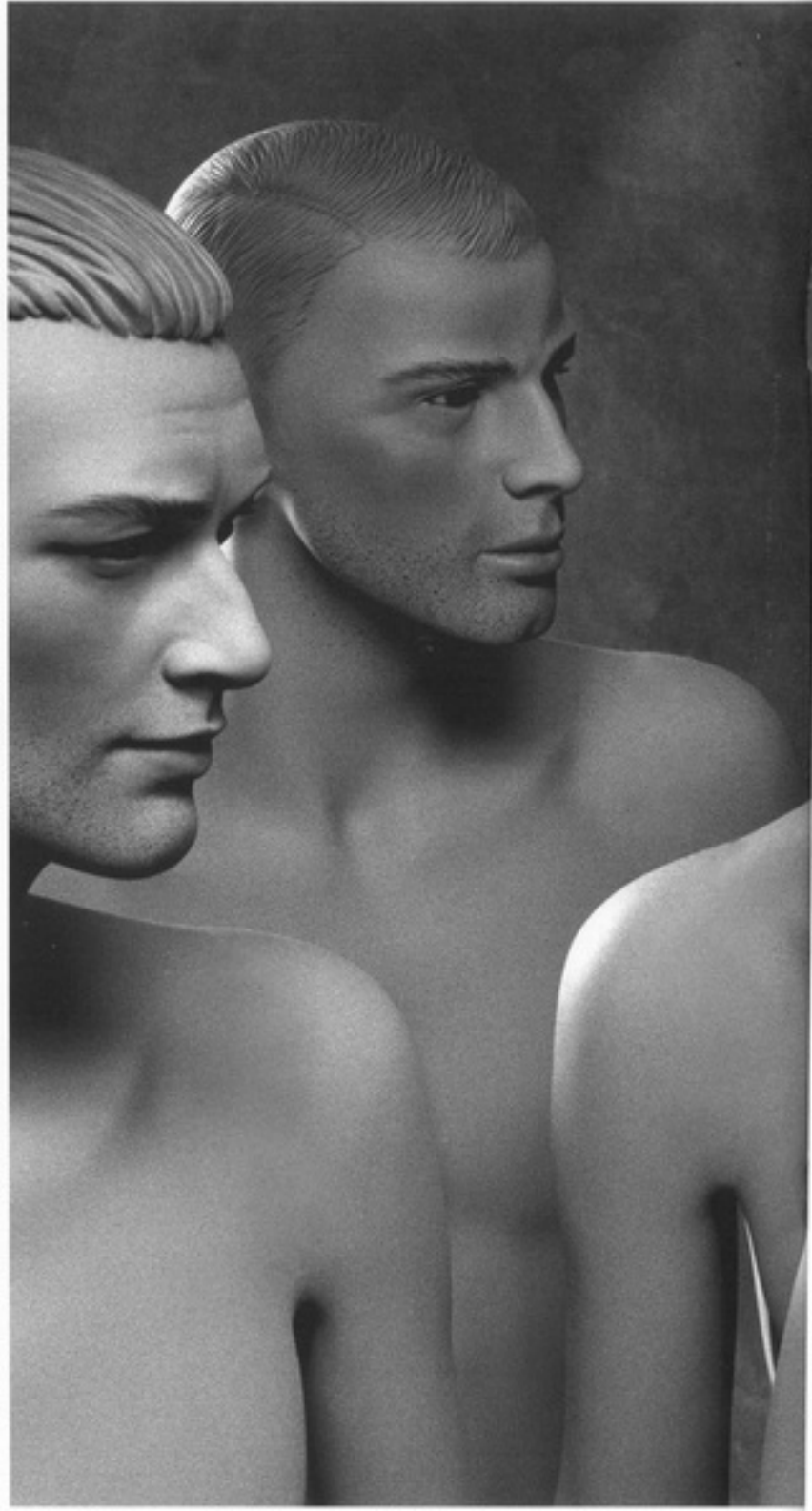
Wig: NWM.334

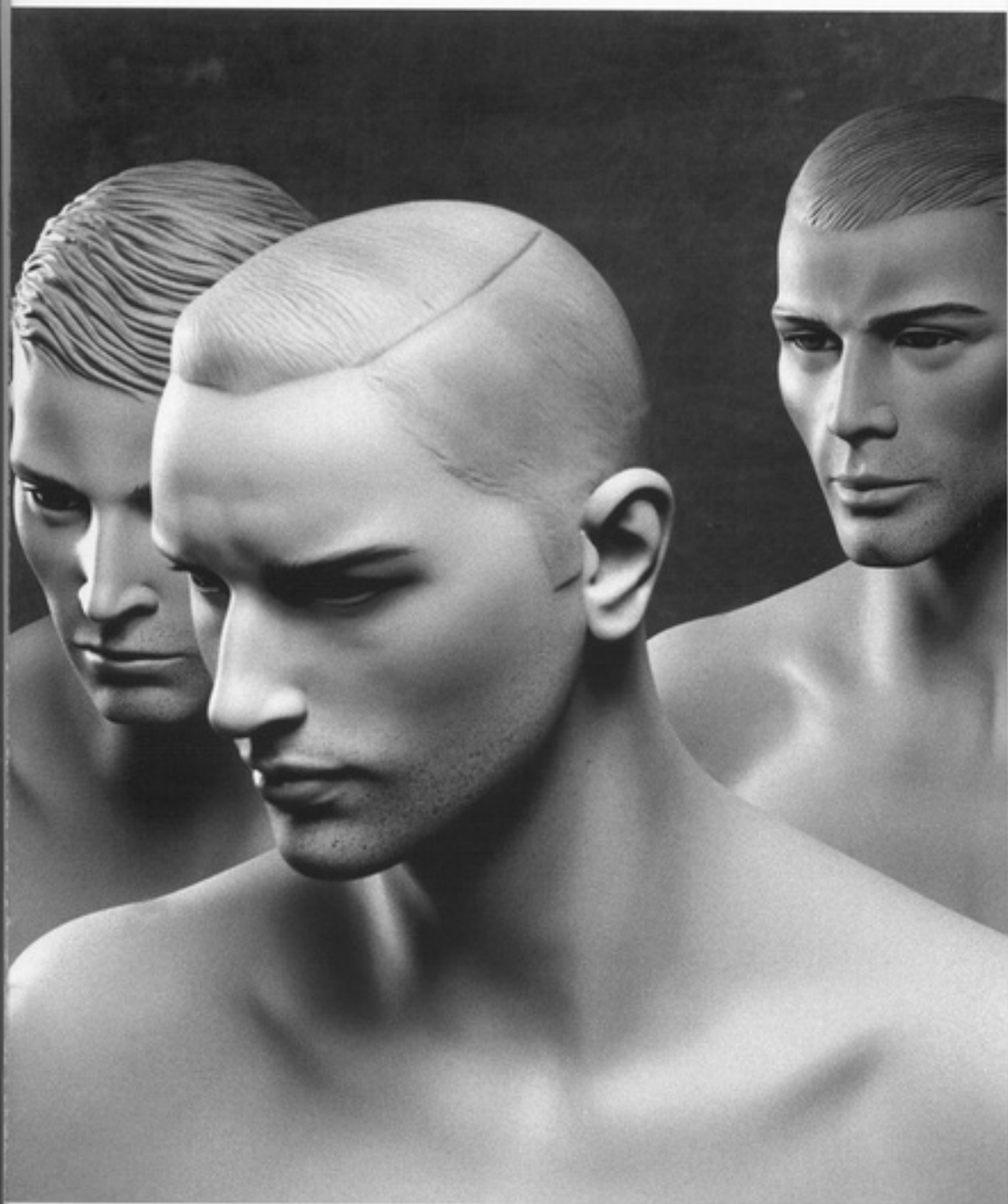
2913/554

Make up: U.128

Wig: NWM.351

INTRODUCING: DAVID SCULPTED







DAVID
DAVID
DAVID





S.217
Make up: SH.278



2902/S.217



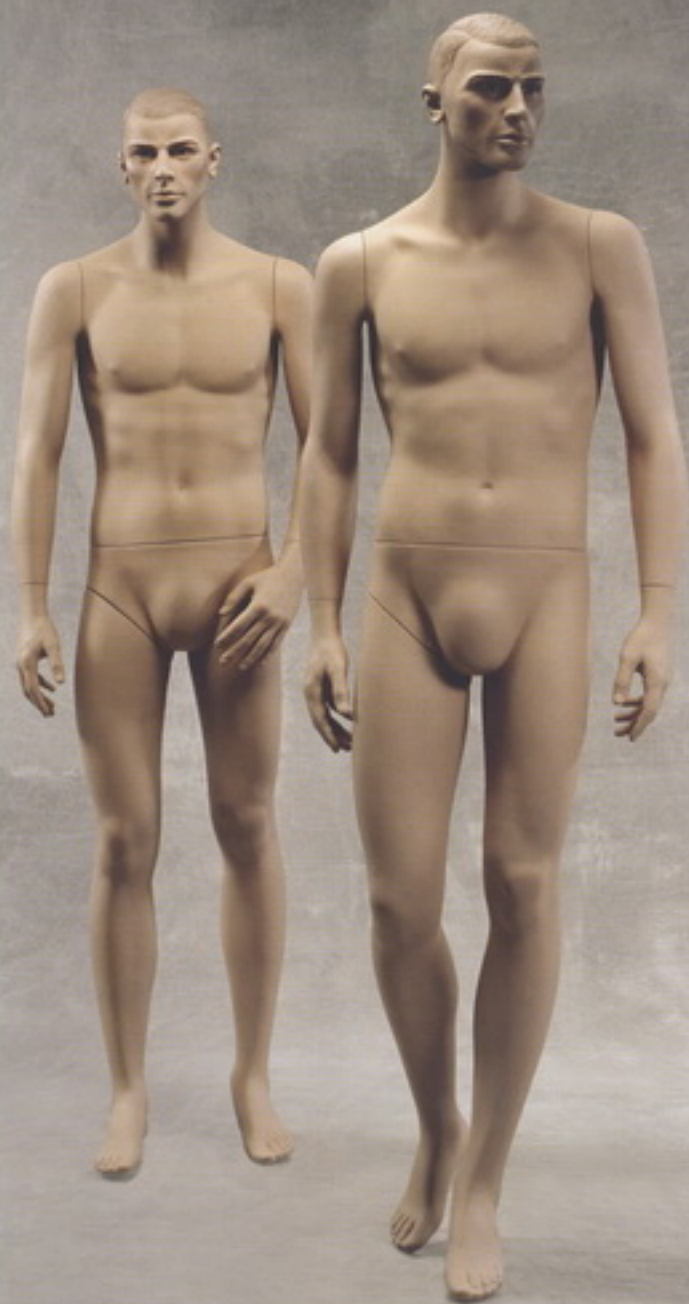


DAVID
DAVID
DAVID



S.215

Make up: SH.278



S.223

Make up: SH.278

2914/S.223 2910/S.223

DAVID
DAVID
DAVID



All the models: body col. 233TZA

Height:	cm. 188	74"
Collar:	cm. 38	15"
Chest:	cm. 99	39"
Waist:	cm. 80	31 1/2"
Inside leg:	cm. 87	34 1/2"
Shoes:	44	10"

All dimensions are approximate



Concept & Art direction studio No. Major - Photo by Anupama Kulkarni / © 2006 Almax S.p.A.



MANNEQUINS AND DISPLAY ITEMS