

DAVID



Dieter Kirschbaum

Türnicher Str. 3 * 50969 Köln

Tel: 0221/9367715 Fax: 0221/9367719

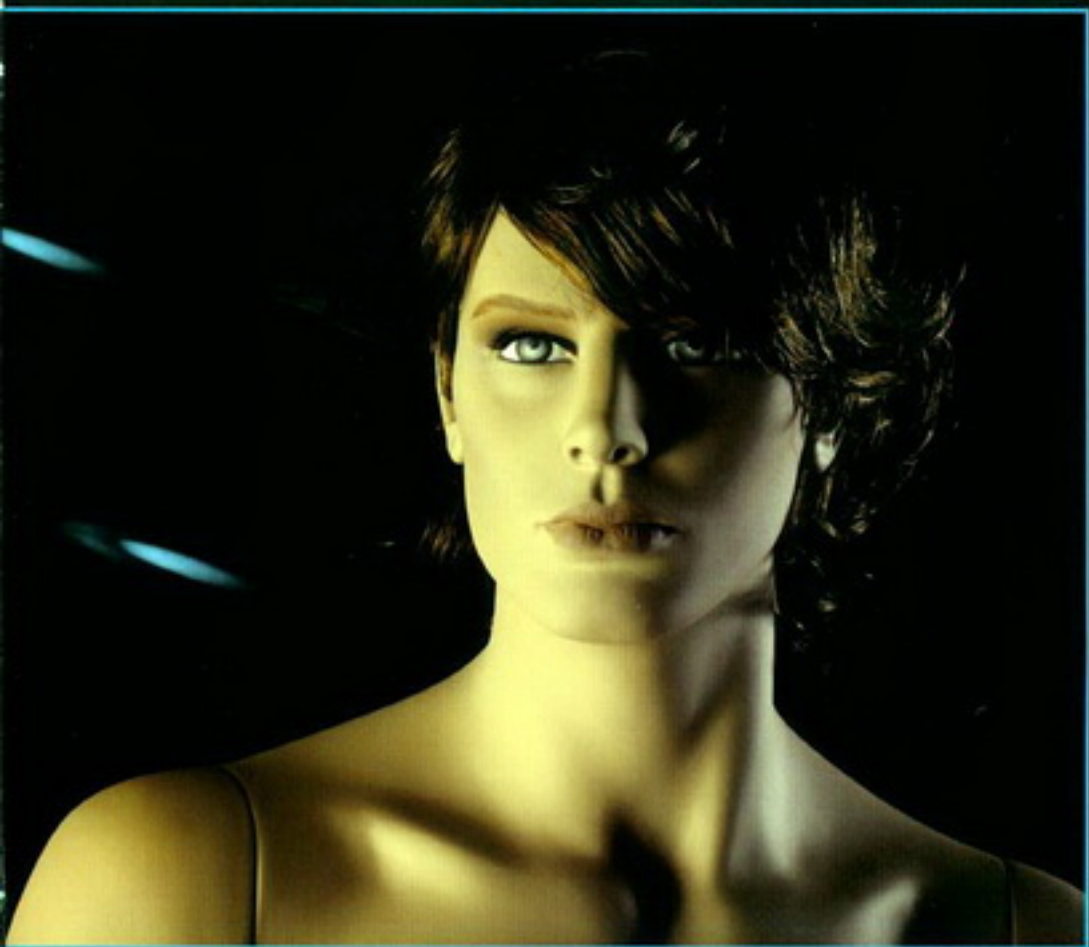
mail: kirschbaum-merzenich@t-online.de

www.kirschbaum-schaufensterfiguren.de





2922/558



558
Make up: U.148
Wig: NWM.371



2921/561



561
Make up: U.148
Wig: NWM.375



556
Make up: U.148
Wig: NWM.369



2918/556



S.237
Make up: SH.283



2917/S.237



S.238
Make up: SH.283



559
Make up: U.148
Wig: NWM.372

2990/559





562
Make up: U.148
Wig: NWM.376

2919/562



561
Make up: U.148
Wig: NWM.374

2995/561

H.: cm. 142 56"
D.: cm. 95 37 1/2"

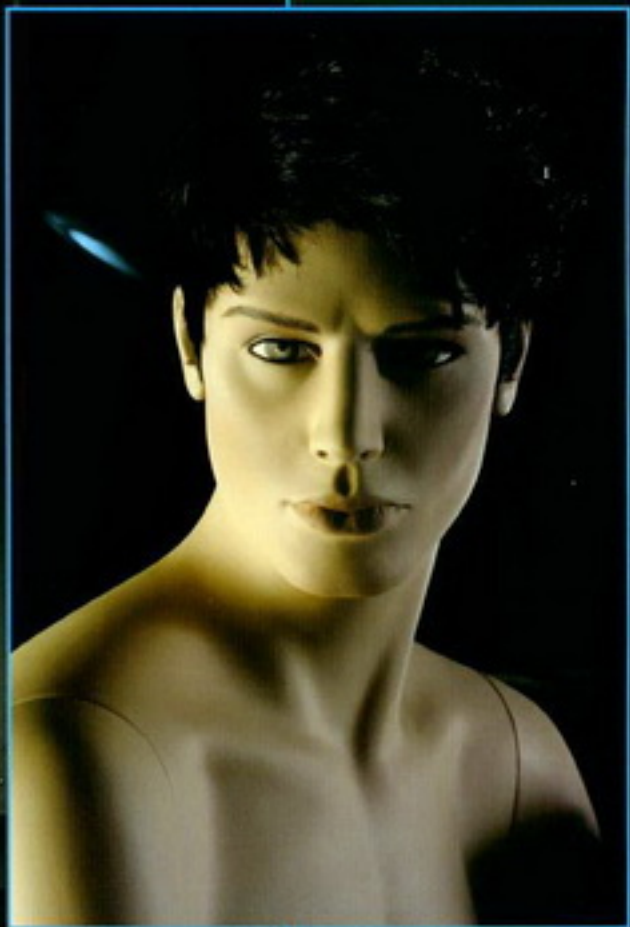
W.: cm. 79 31"
Block h.: cm. 48 19"



2923/560



560
Make up: U.148
Wig: NWM.373



558
Make up: U.148
Wig: NWM.370

2916/558



All the models: body col. 194 TZA

Height:	cm.	188	74"
Collar:	cm.	38	15"
Chest:	cm.	99	39"
Waist:	cm.	80	31 $\frac{1}{2}$ "
Inside leg:	cm.	87	34 $\frac{1}{2}$ "
Shoes:	cm.	44	10"

All dimensions are approximate

